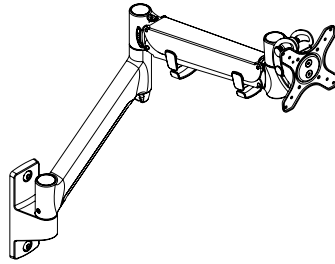
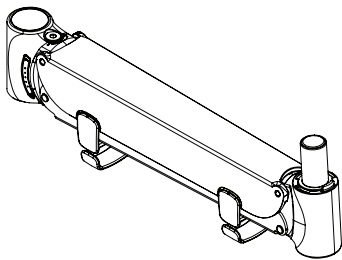


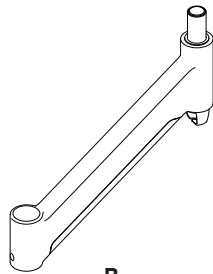
HD Dynamic Arm Wall Mount



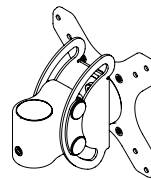
COMPONENT CHECKLIST



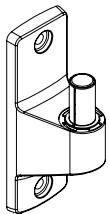
A
HD Dynamic Link
(x1)



B
Lower Angled
Link
(x1)



C
Heavy Duty Tilt Head
(x1)



D
Single Wall
Bracket
(x1)



E
Screw
M4x25mm
(x4)



F
Screw
M4x16mm
(x4)



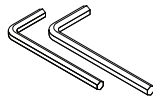
G
Screw
M4x12mm
(x4)



H
Spacer
(x4)



I
Rotation Screw
M5x16mm
(x4)



J
4mm/6mm
Hex Key
(x1)



K
Screw
M8x70mm
(x2)



L
Washers
(x2)

Wall

REQUIRED TOOLS

- Phillips head screwdriver
- Power drill
- Suitable drill bit
- Driver bit for selected wall fasteners
- Stud finder
- Spirit level

WEIGHT RANGE

Flat Monitor
6 - 16kg (13 - 35lbs)

Curved Monitor
6 - 12kg (13 - 26.5lbs)

**Max. Overall
Monitor Depth**
210mm (8.27")

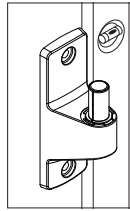
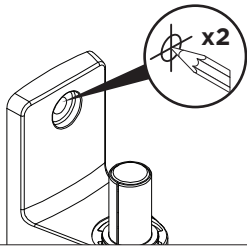
Monitor weight should be within the weight range of all modular elements that make up the complete monitor mounting solution.

IMPORTANT INFORMATION

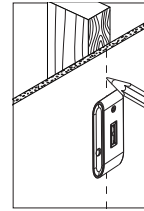
- ! Please ensure this product is installed as per these installation instructions.
- ! Do not remove or throw away the plastic sleeve on wall bracket and arm links.
- ! The manufacturer accepts no responsibility for incorrect installation.
- ! Failure to install this product correctly may cause serious injury/death during or following installation.
- ! This product is not suitable for outdoor use.
- ! Do not use this product for mobile applications.
- ! This product should only be installed by professional installers of good mechanical aptitude, who have experience with building construction, and fully understand these instructions and the consequences of incorrect installation.
- ! Supplied wall fasteners are for timber stud wall constructions **only**. For other wall constructions, such as masonry, alternative suitable wall fasteners should be sourced by the installer.
- ! To safely achieve the full capacity of this product, wall fasteners must have a pull-out (tension) force rating of at least 100kg (1000N) **per** fastener. This rating must include a safety factor.
- ! Professional installer to ensure adequate structural capacity of wall (including appropriate safety factor) to support total weight of all equipment being mounted.
- ! Drilling into electrical wires can cause death - use appropriate equipment and caution when drilling holes in walls to avoid electrical cables, water pipes and gas pipes. Do not drill into structures unless you have established it's safe to do so.
- ! Curved monitors, deep devices (such as all-in-one PCs), VESA mounted accessories (such as mini PC brackets and mounts), and offset VESA locations exert additional leverage that can exceed the capacity of the mount even though the monitor weight may be within the stated range. Please contact Atdec if you would like further information.

1. Mount the Wall Bracket to the Wall

Using the Single Wall Bracket as a template, mark the two fixing hole positions for drilling.

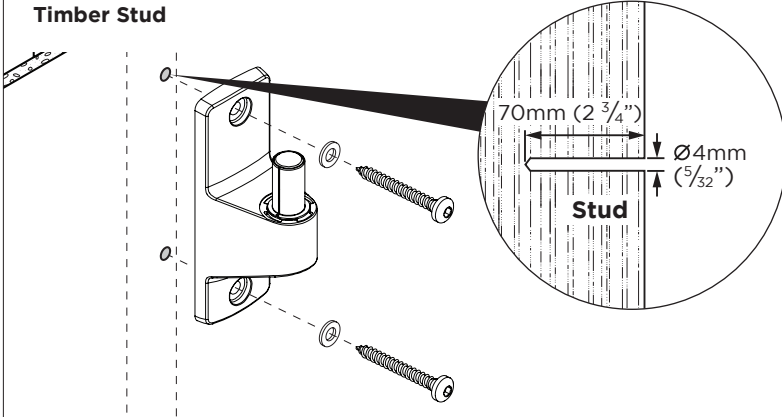


NOTE: Wall bracket must be level. Verify using a quality spirit level tool positioned along the side edge of the wall bracket.



NOTE: On a timber stud wall, use a good quality stud finder to position mounting fasteners in the centre of studs.

Timber Stud



NOTE:

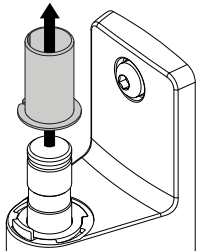
- Alternative wall constructions, such as masonry, will require different fasteners than what is supplied with the product.
- Selection and sourcing of alternative wall mounting fasteners is the responsibility of the installer. See 'Important Information' above for more details.

NOTE: Thickness of sheeting and cladding over the timber stud, including plaster board, should not exceed 15mm (5/8").

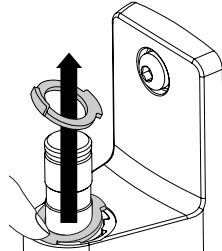
2. (Optional) Set arm rotation to 360°

Note rotation is set to 180° by default. This will protect the wall by preventing the arm swinging into it.

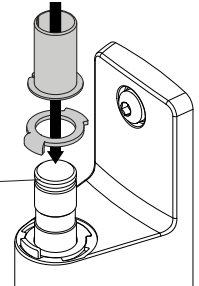
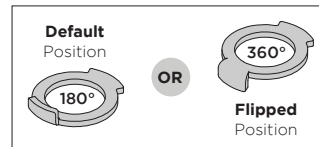
2.1. Remove plastic sleeve from wall bracket



2.2. Remove rotation ring.

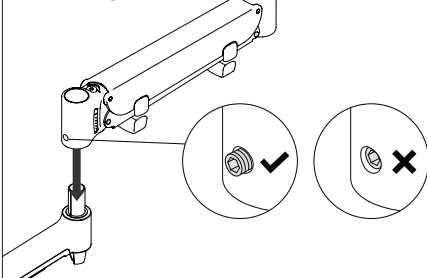


2.3. Place rotation ring in desired position and **replace** plastic sleeve.

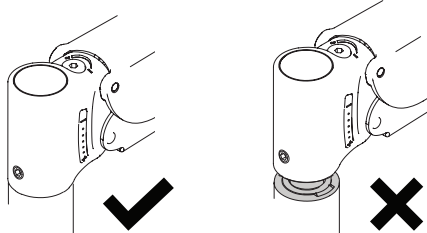


3. Assemble Arm Links

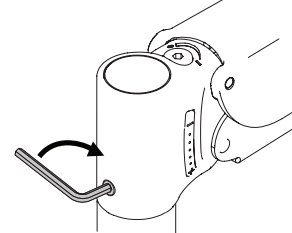
3.1. Push two arm links together



3.2. Ensure arm is fully pushed together



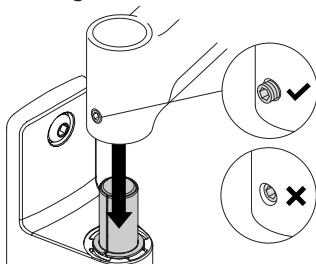
3.3. Tighten set screw



NOTE: Check that arm rotation is smooth after tightening

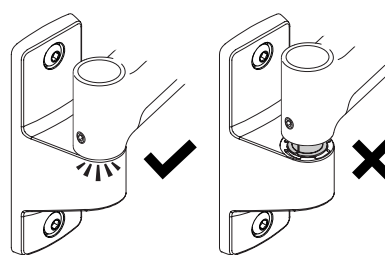
4. Fit arm to Single Wall Bracket

4.1. Push arm onto the wall bracket shaft. Ensure grub screw is retracted before doing so.

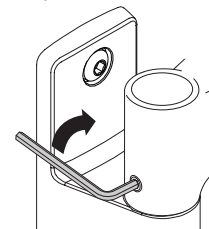


NOTE: Ensure plastic sleeve is on shaft before fitting arm.

4.2. Ensure arm is fully pushed onto bracket



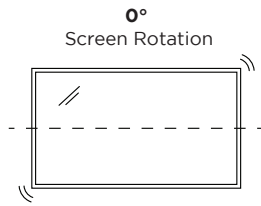
4.3. Tighten the set screw with 4mm Hex Key to secure the arm in place.



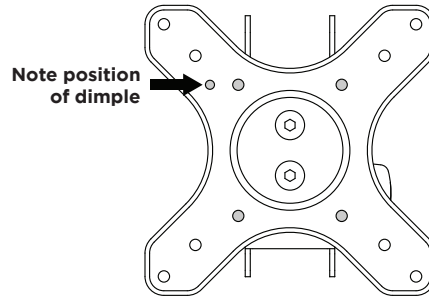
NOTE: Check the joint rotation is smooth after tightening.

5. Lock monitor rotation (Optional)

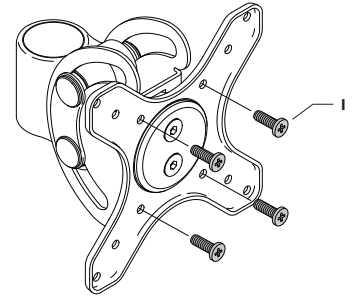
OPTIONAL To lock monitor rotation screws the M5x16 screws into the holes on the front of the VESA Head.



5.1. Ensure VESA Plate is in this orientation before installing screws.

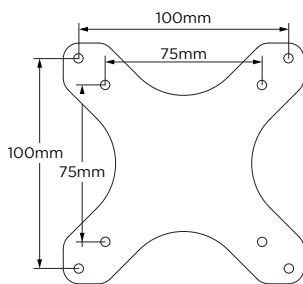


5.2. Install the four Rotation Screws I into the front of the VESA Head.



6. Attach VESA head to monitor

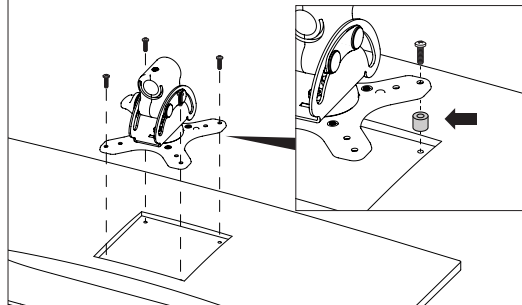
6.1. Check VESA mounting compatibility



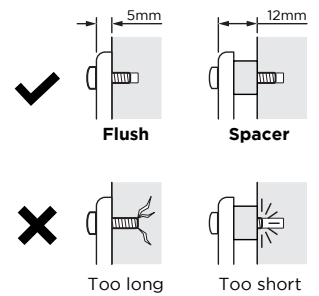
NOTE: For other sizes, use a suitable adaptor plate (sold separately).

6.2. Attach VESA head onto monitor with provided screws.

NOTE: Spacers may be required for curved, recessed or uneven monitor surfaces.

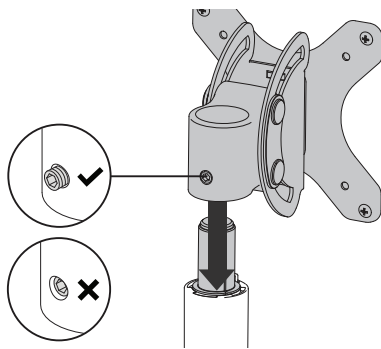


NOTE: Be sure to use a screw length that suits the monitor.



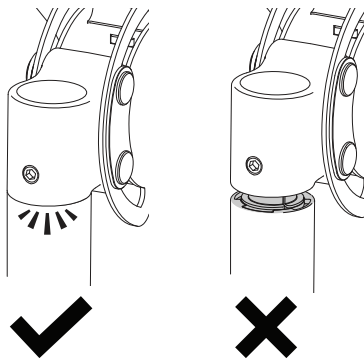
7. Mount monitor onto Dynamic arm

7.1. Push tilt head onto the shaft at the end of the monitor arm, grub screw must be backed off at this time.

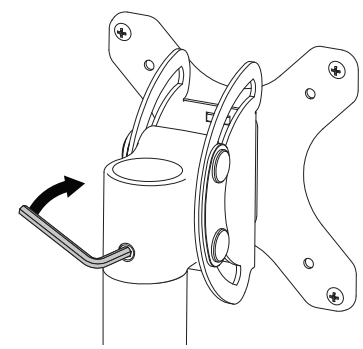


NOTE: Ensure plastic sleeve is on shaft before fitting tilt head.

7.2. Ensure tilt head is fully pushed onto shaft.



7.3. Tighten the joint screw with 4mm Hex Key J to secure the tilt head and monitor in place.

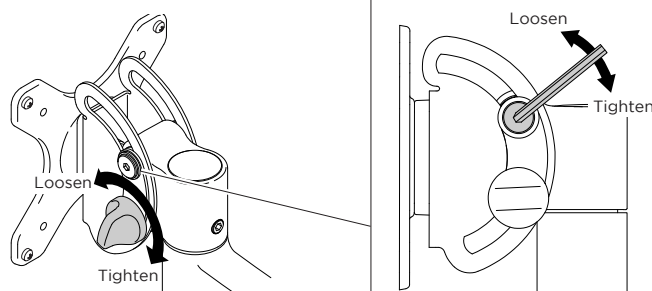


NOTE: Check the head pan adjustment is smooth after tightening.

8. Adjust tilt tension

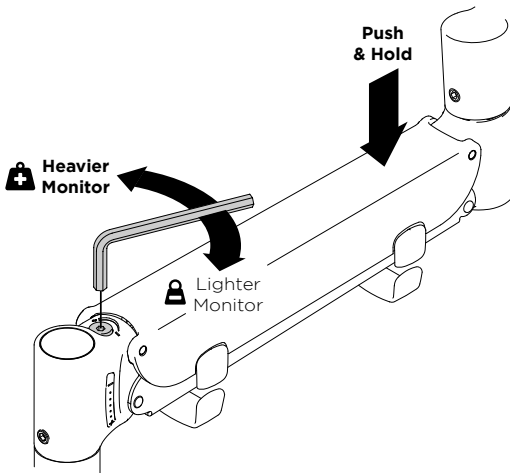
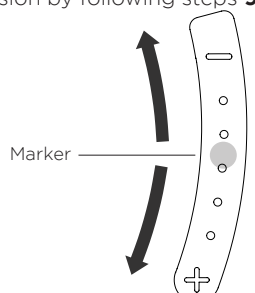
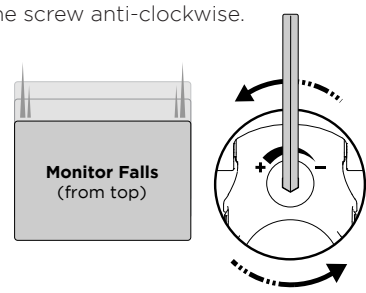
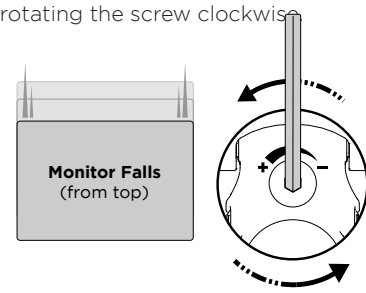
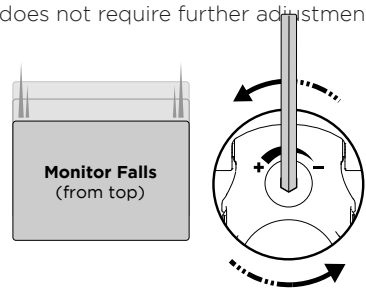
Use the knob to tighten and loosen the tilt tension to suit your monitor weight.

NOTE: Always support the monitor whilst adjusting to prevent it from falling forward sharply.



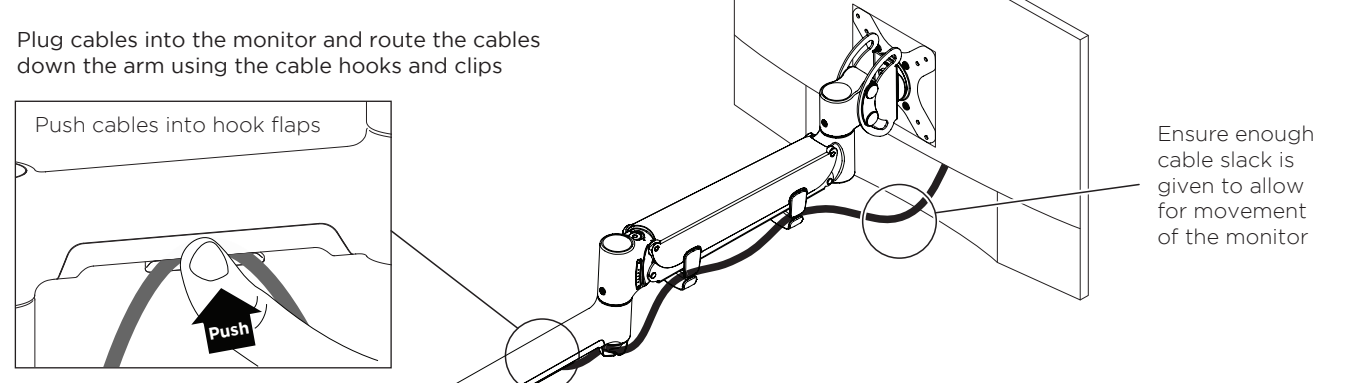
IMPORTANT
If extra tilt tension is required for your monitor, use 4mm Hex key to tighten second tilt screw.

9. Adjust arm tension

<p>9.1. Use the provided hex key J to adjust the arm tension</p>  <p>NOTE: Hold arm in horizontal position when adjusting</p>	<p>9.2. Installing multiple similar monitors?</p> <ol style="list-style-type: none"> 1. Set up one monitor and record the position of the marker on the gauge. 2. When installing other similar monitors, pre-tension the arm to the recorded marker position then fine-tune the tension by following steps 9.3 to 9.5. 	
<p>9.3. If the monitor sags or falls down, increase the arms tension by rotating the screw anti-clockwise.</p>  <p>+ Increase Tension</p>	<p>9.4. If the monitor springs upwards, decrease the arms tension by rotating the screw clockwise.</p>  <p>+ Increase Tension</p>	<p>9.5. If the monitor floats or hovers in all positions the arm tension is balanced and does not require further adjustment.</p>  <p>+ Increase Tension</p>

10. Monitor arm cable management

Plug cables into the monitor and route the cables down the arm using the cable hooks and clips

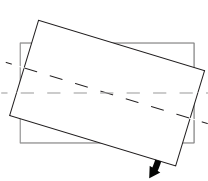
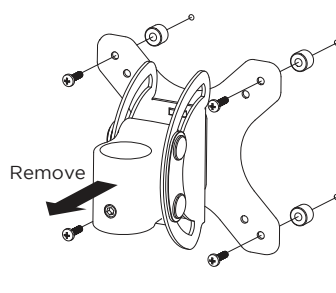
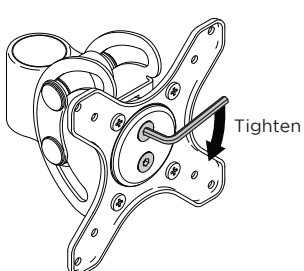
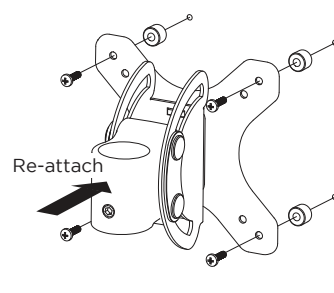


Push cables into hook flaps

Push

Ensure enough cable slack is given to allow for movement of the monitor

11. Adjust rotation tension (Optional)

<p>NOTE: In most cases, monitor should balance in a level position with factory settings. If it droops to one side follow these steps to adjust the rotation tension.</p> 	<p>11.1. Remove VESA head from monitor.</p>  <p>Remove</p>	<p>11.2. Tighten the two screws on the front of the VESA plate using 4mm Hex Key</p>  <p>Tighten</p>	<p>11.3. Re-attach VESA head to monitor as per Step 5.</p>  <p>Re-attach</p>
--	--	---	---