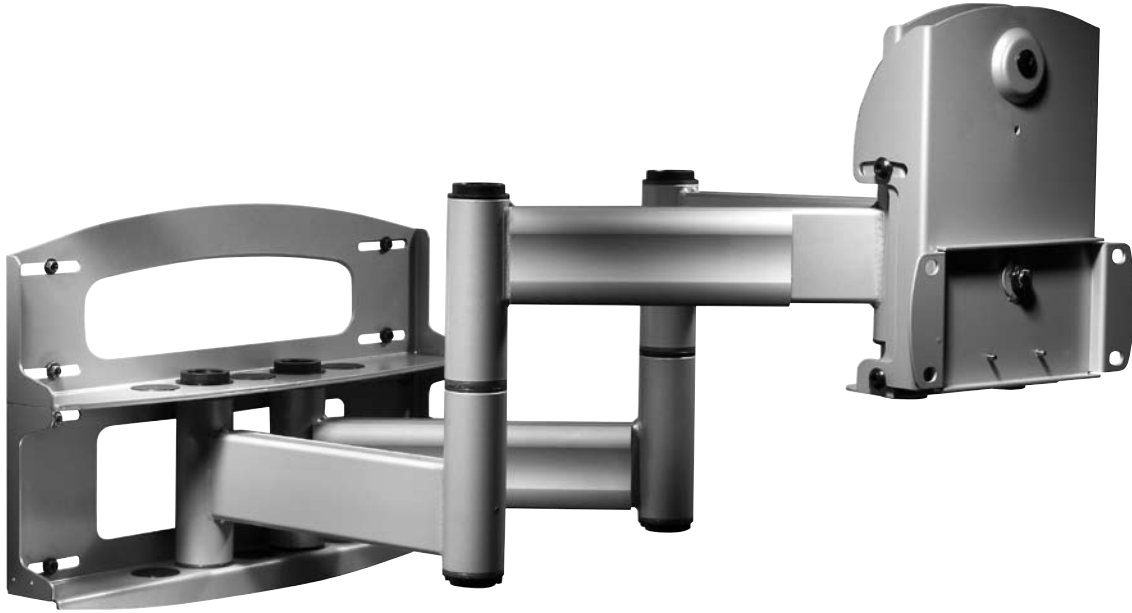


## Articulating Dual-Arm with Vertical Adjustment For 42" to 71" Plasma & LCD Flat Panel Screens



Designed to handle the heaviest screens, the PLAV70 features dual-arm, all-steel construction that holds screens up to 71" and weighing up to 200 lb. The PLAV70's self-lubricating bushings enable your screen to smoothly articulate, while adjustable tilt and pivot allow you to position your screen for the optimal viewing angle. Swing, tilt and extend your plasma or LCD screen, even in and out of recessed cubby holes and custom frames with the vertical adjustment feature that provides the capability to raise or lower your screen for a perfectly aligned installation.

- For 42" to 71" plasma and LCD flat panel screens
- Innovative and exceptional functionality
- Roll feature allows for easy screen leveling
- Folds flat against the wall
- Cord management keeps cords organized and out of sight
- Comes in black or silver

PLAV70



# Articulating Dual-Arm with Vertical Adjustment

## For 42" to 71" Plasma & LCD & Flat Panel Screens

### Model Numbers

PLAV70, PLAV70-S (base models)  
 PLAV70-UNL, PLAV70-UNL-S (universal security models for 42" - 65" screens)  
 PLAV70-UNLP, PLAV70-UNLP-S (universal standard models for 42" - 65" screens)

### Product Specifications

- Dual-arm construction
- Anti-lockout feature prevents joint binding
- +/-1" vertical adjustment located within reach behind screen
- +10°/-5° tilt
- Up to 180° pivot
- +/-7° roll to level screen horizontally at any position
- Extends out to 30.7", retracts to 4.5" (plus thickness of required adapter plate)
- Snap-cover cord management and mesh cord sheaths
- Mounts to two wood studs or concrete (accessory required)
- Universal models adapt to screens with up to 28.7" wide x 17" high mounting inserts



#### FEATURES

#### LOAD CAPACITY

200 lb (90.7 kg)

#### DIMENSIONS (W x H x D)

	Closed	Extended
PLAV70:	33.5" x 21.7" x 4.5" (62.5 x 55.1 x 11.4 cm)	20.3" x 21.7" x 30.7" (51.6 x 55.1 x 79.2 cm)
PLAV70-UNL(P):	33.5" x 21.7" x 5.6" (78 x 55.1 x 14.2 cm)	30.75" x 21.7" x 31.9" (78.1 x 55.1 x 77.5 cm)

#### PRODUCT WEIGHT

PLAV70: 50.5 lb (22.9 kg)  
 PLAV70-UNL(P): 63 lb (28.6 kg)

#### FINISH

Scratch resistant fused epoxy

#### CONSTRUCTION

All steel

#### AVAILABLE COLORS

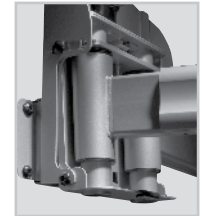
Black: PLAV70, PLAV70-UNL(P)  
 Silver: PLAV70-S, PLAV70-UNL(P)-S

#### ACCESSORIES

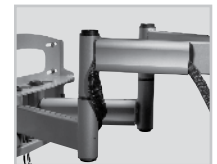
Multi-channel speaker mount (MSA-101)  
 Wire management channel (ACC924/ACC926)  
 PLP model adapter plates  
 Concrete fasteners (2 x ACC204)

#### PATENT

Patent Pending



Vertical adjustment



Cord management

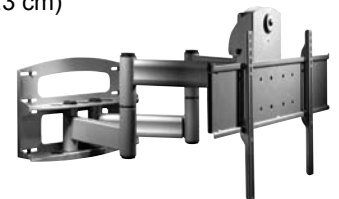
### Package Specifications

PLAV70: Articulating arms, wall plate, mesh cord sheath, snap-cover cable channels and mounting hardware  
 PLAV70-UNL(P): Articulating arm, wall plate, mesh cord sheath, cable ties, universal adapter plate, mounting and screen attachment hardware

PLAV70 and PLAV70-UNL(P): 34.69" x 23.63" x 8" (88.11 x 60 x 20.3 cm)

PLAV70: 58.6 lb (26.6 kg)  
 PLAV70-UNL(P): 72 lb (32.7 kg)

PLAV70: 735029243199  
 PLAV70-S: 735029244783  
 PLAV70-UNL: 735029243359  
 PLAV70-UNL-S: 735029243366  
 PLAV70-UNLP: 735029243373  
 PLAV70-UNLP-S: 735029243380



Universal model includes universal adapter plate for up to 65" screens

#### PACKAGE CONTENTS

#### PACKAGE SIZE (L X W X H)

#### PACKAGE SHIP WEIGHT

#### PACKAGE UPC CODE

(800) 865-2112  
 www.peerlessmounts.com

Peerless Industries, Inc.  
 3215 W. North Avenue, Melrose Park, IL 60160  
 (708) 865-8870 or (800) 865-2112 Fax: (708) 865-2941 [www.peerlessmounts.com](http://www.peerlessmounts.com)

© 2006 Peerless Industries, Inc. All rights reserved.  
 Peerless is a registered trademark of Peerless Industries, Inc.  
 All other brands, product names and taglines are trademarks or registered trademarks of their respective owners.

