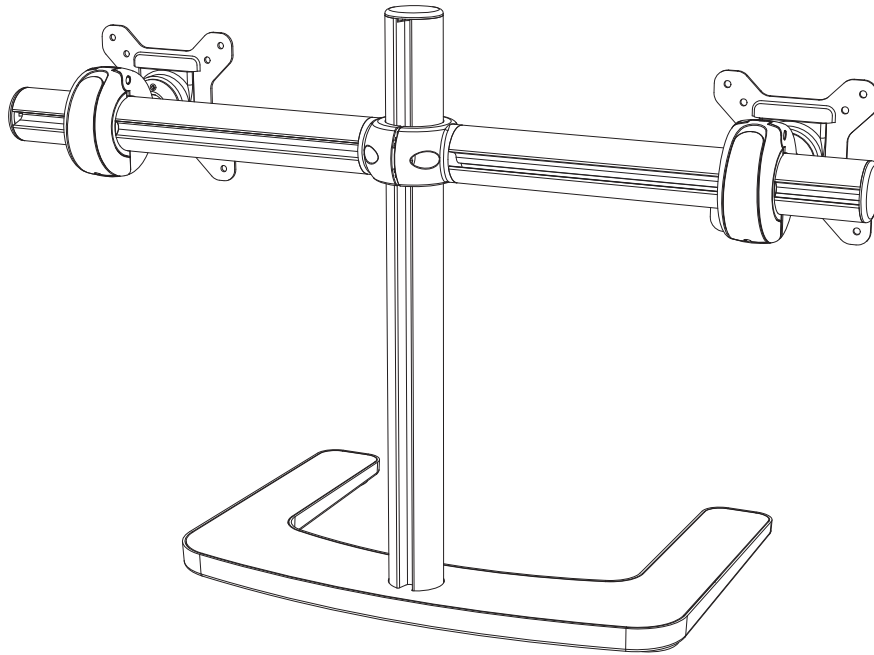
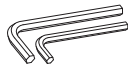
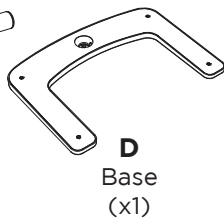
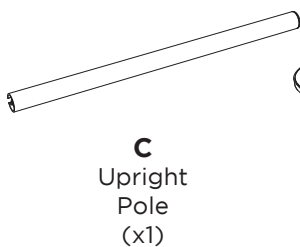
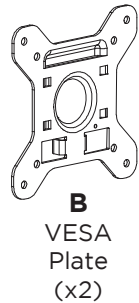
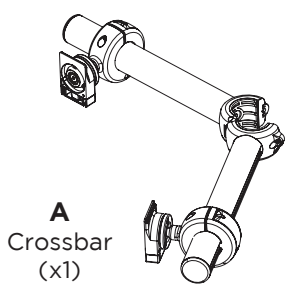


## Freestanding Dual Horizontal



### COMPONENT CHECKLIST



Desk 

### REQUIRED TOOLS

- Phillips Head Screwdriver

### WEIGHT RANGE Per Monitor

**Flat Monitor**  
0 - 12kg (0 - 26.5lb)

**Curved Monitor**  
0 - 9kg (0 - 20lb)

#### NOTE

- 120mm (4.75") max overall monitor depth.
- 2kg (4.4lb) maximum weight difference between monitors.

### IMPORTANT INFORMATION

! Please ensure this product is installed as per these installation instructions.

! Each VFS Display Head supports a maximum weight as per above weight range specification.

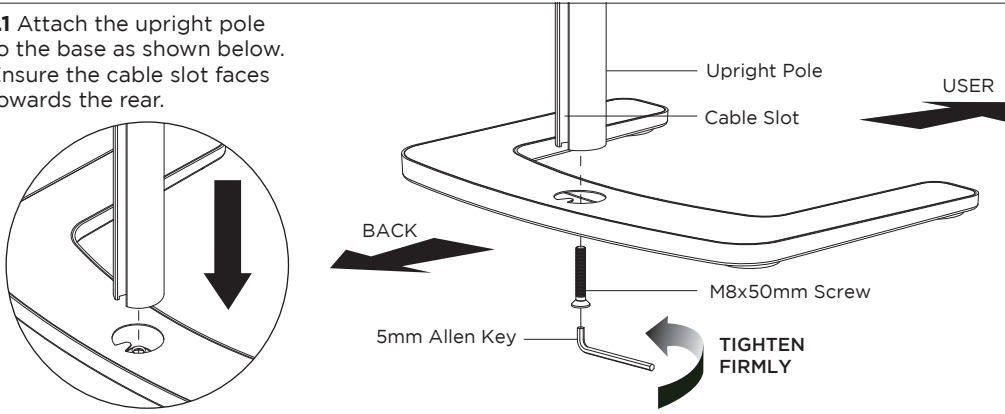
! This product supports VESA mounting hole configurations: 75x75mm and 100x100mm.

! The manufacturer accepts no responsibility for incorrect installation.

! Curved monitors, deep devices (such as all-in-one PCs), VESA mounted accessories (such as mini PC brackets and mounts), and offset VESA locations exert additional leverage that can exceed the capacity of the mount even though the monitor weight may be within the stated range. Please contact Atdec if you would like further information.

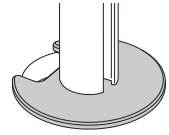
## 1. Attach Upright Pole to Base

1.1 Attach the upright pole to the base as shown below. Ensure the cable slot faces towards the rear.



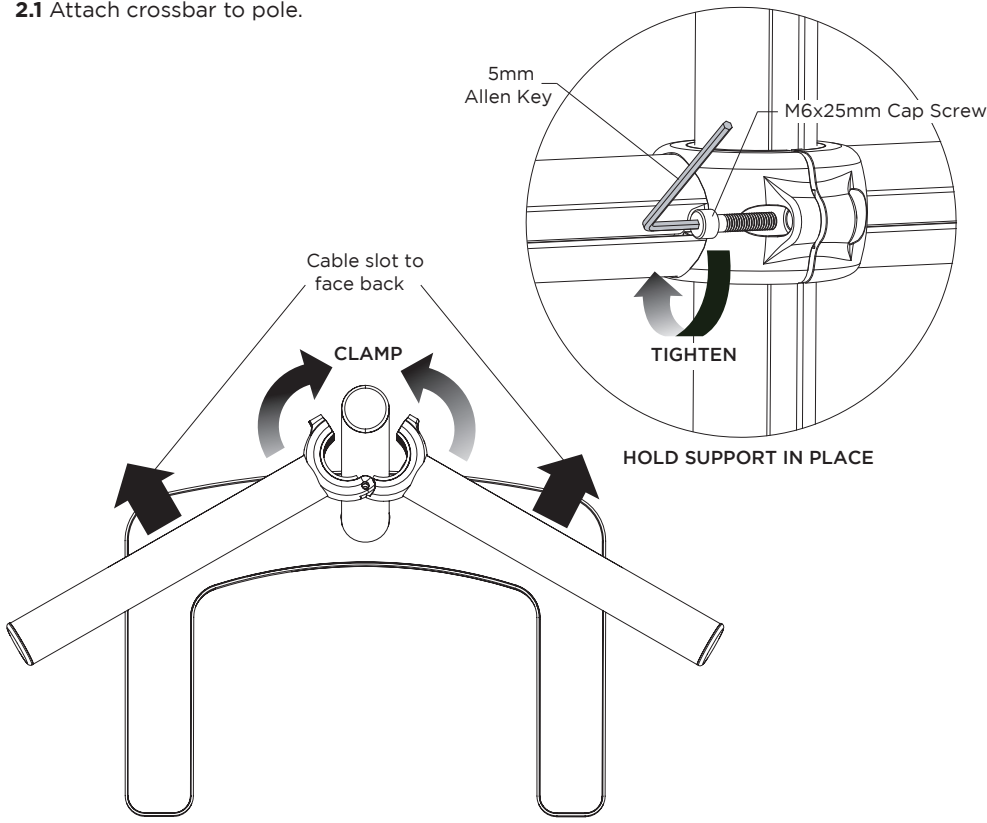
### OPTIONAL BOLT THROUGH & GROMMET MOUNT

Mount can also be bolted to work surface or via grommet hole with the Atdec Grommet Clamp (AC-GC), sold separately.

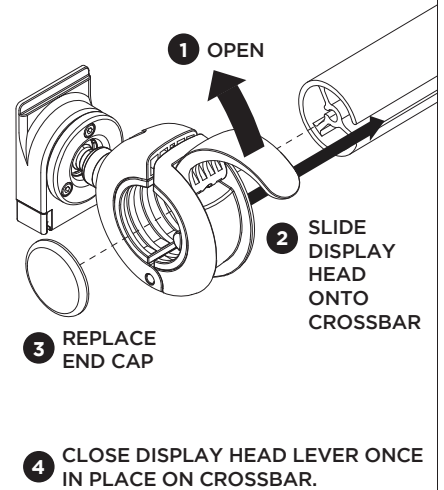


## 2. Attach crossbar and display heads

2.1 Attach crossbar to pole.

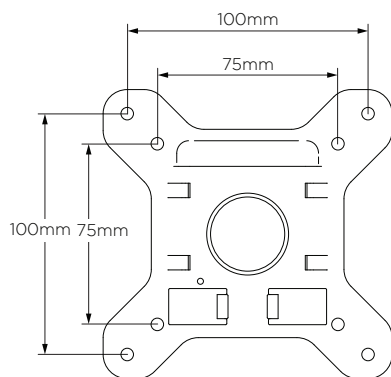


2.2 Slide display heads onto crossbar.

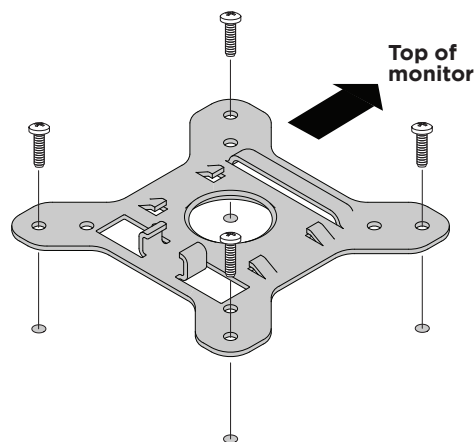


## 3. Attach the VESA plate to your monitor (Repeat steps 3 to 6 for each monitor)

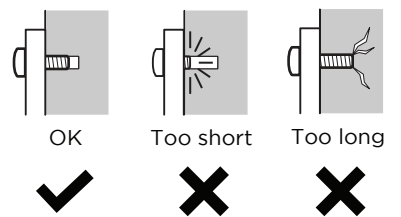
3.1 Check VESA mounting compatibility



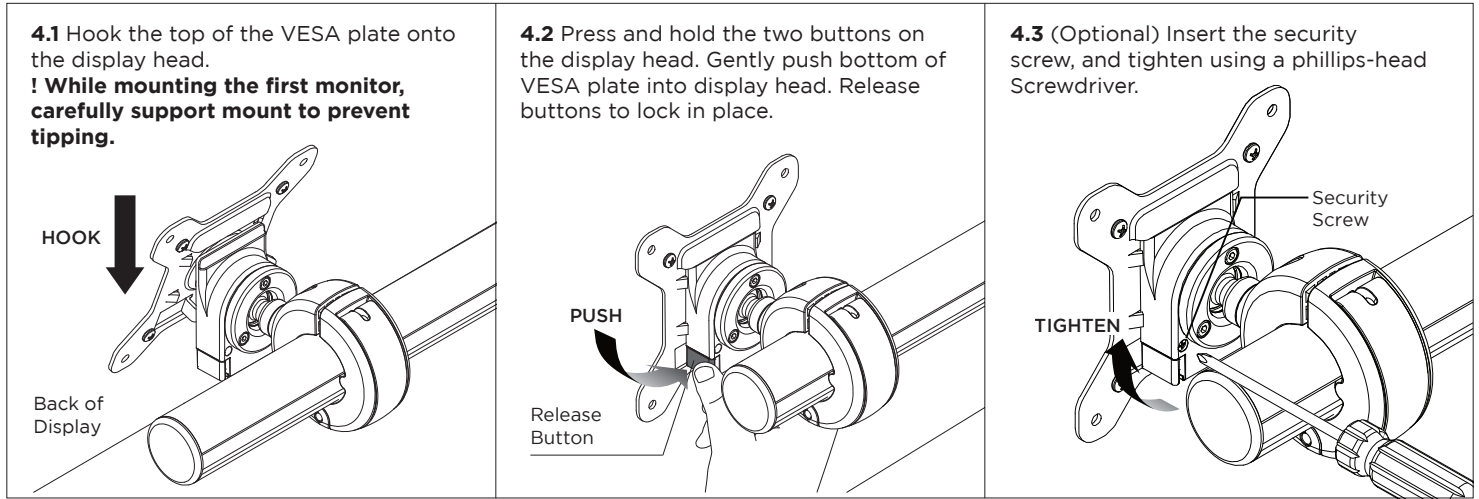
3.2 Screw VESA plate to back of monitor using provided screws.



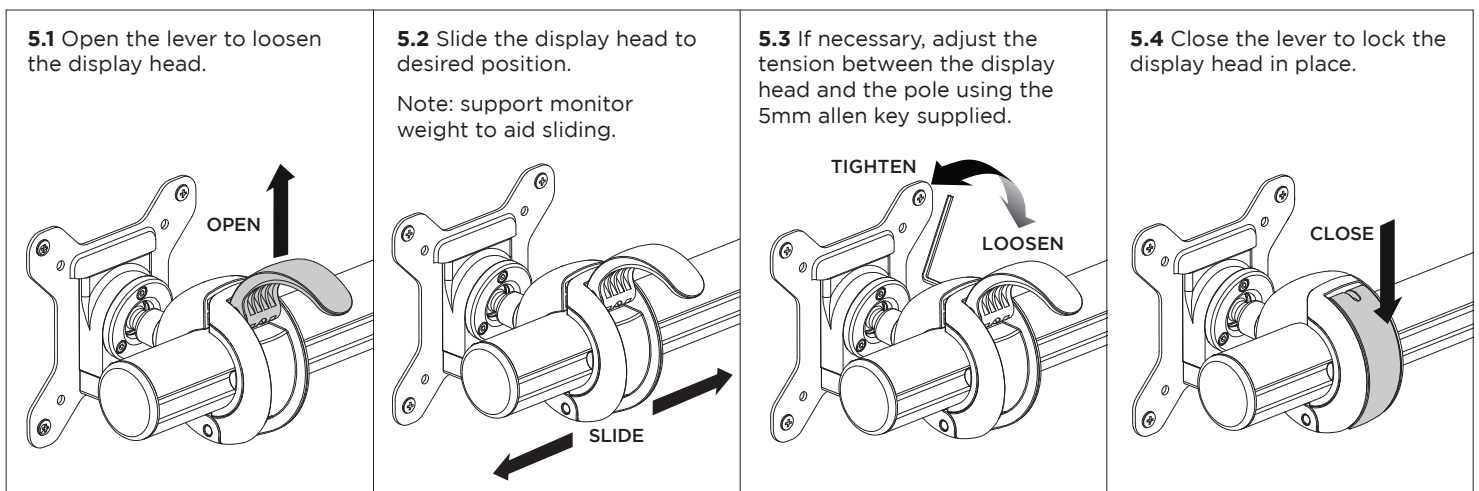
**NOTE:** Be sure to select a screw length that suits the monitor.



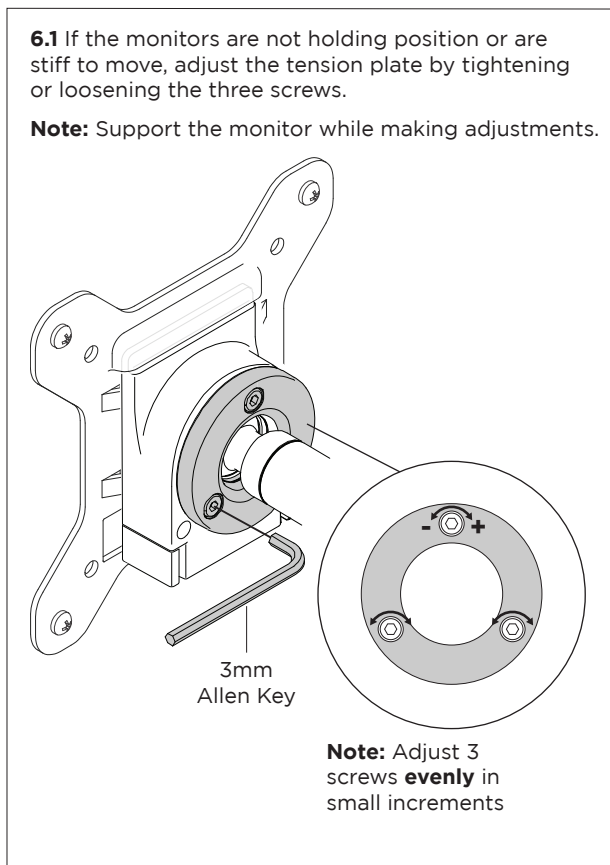
## 4. Attach your display to the VFS display head



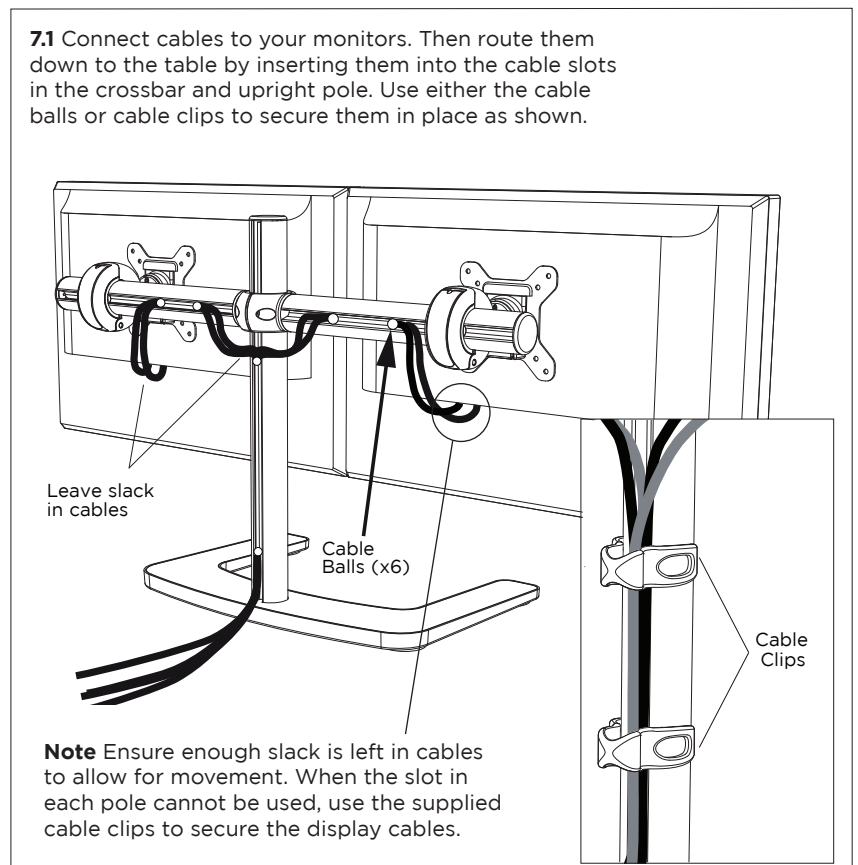
## 5. Adjust horizontal position of the monitor



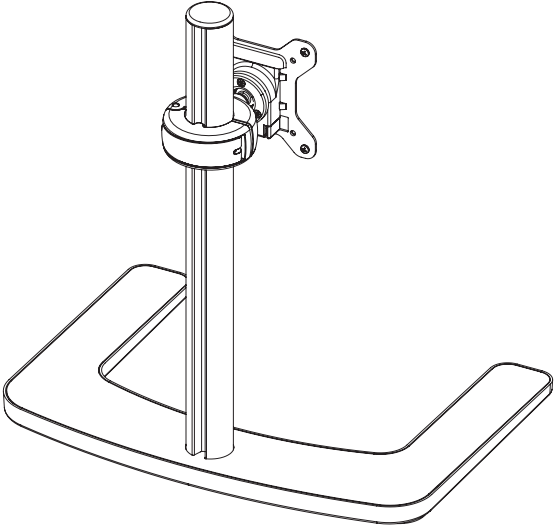
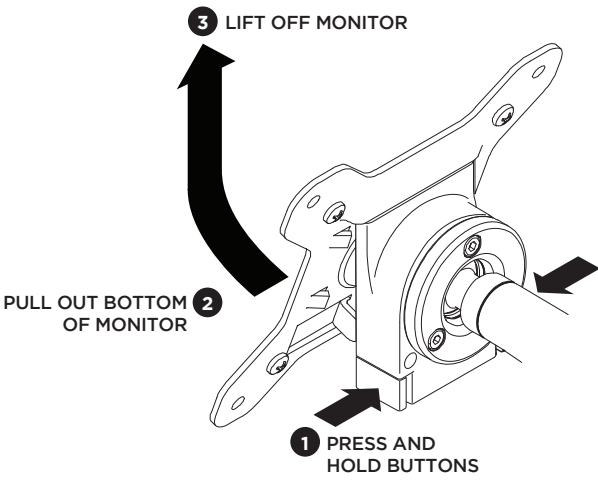
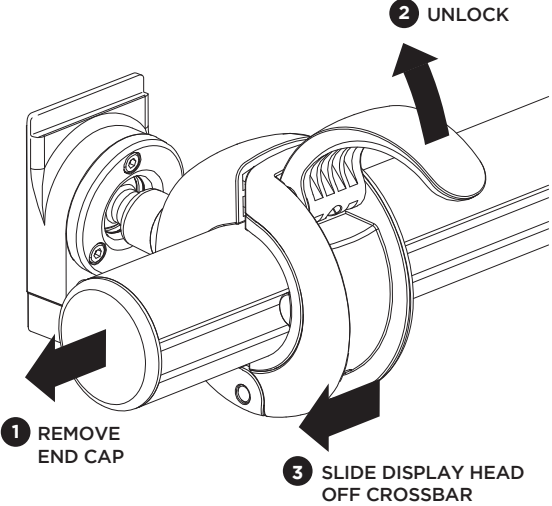
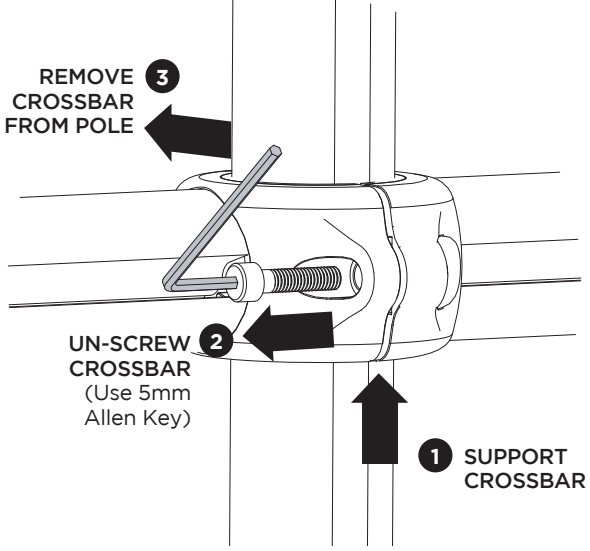
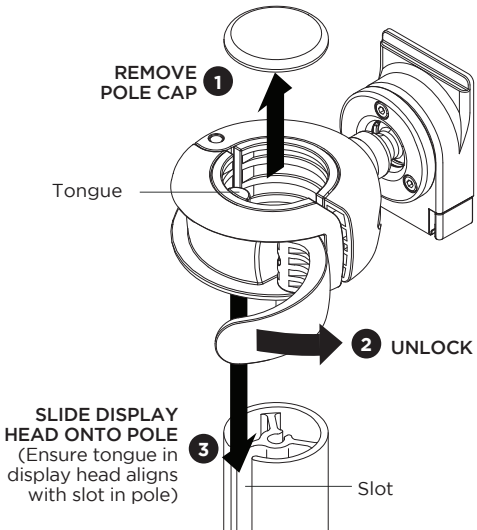
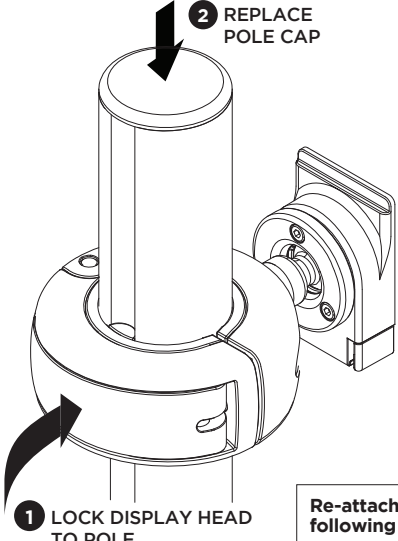
## 6. Adjust the ball joint tension



## 7. Cable Management



## OPTIONAL 8. Switch to a single monitor mount

<p><b>Preview</b></p> 	<p><b>8.1 Remove monitors</b></p> 
<p><b>8.2 Slide display head off crossbar</b></p> 	<p><b>8.3 Remove crossbar from pole</b></p> 
<p><b>8.4 Slide display head onto pole</b></p> 	<p><b>8.5 Lock display head onto pole</b></p>  <div style="border: 1px solid black; padding: 5px; width: fit-content; margin-top: 10px;"> <p>Re-attach monitor following steps 4.1 to 4.3</p> </div>