

## For vertically-stacked super ultrawide monitors

Designed for heavy & tightly curved R1000 displays, including Samsung Odyssey G9s. Stylish & secure.



# Freestanding heavy duty dual vertical monitor mount

AWMS-2-BT75-FS

## Perfect placement

Tool-free micro-adjustments to fine-tune monitor alignment;  
- Height +6mm to -6mm ( $\pm 0.2''$ )  
- Levelling +3° to -3°  
*per monitor*



## Super heavy-duty buckets

Quick Connect for displays  
Tilts +10° to -10°

Available in black



## Futureproof

Upgrade as desired with the modular AWM family of products



## Smart base design

Footprint for maximum stability & avoiding central workspace



24" - 55"



75x75  
100x100



25kg (55lb)  
FLAT  
18kg (40lb)  
CURVED

## Height & tilt

Set bracket height & tilt without tools

## Quality construction

Easy assembly & disassembly; base and post constructed in high quality recyclable aluminium

## Freestanding

Flexible placement, no permanent fixtures or holes in desk

**10 Year Warranty**

# Robust & Secure freestanding mount



## Designed for the heaviest super ultrawides

Freestanding mount for day traders, UXers, software developers, gamers, & other data-rich applications  
AWMS-2-BT75-FS



Stocked in black, silver available for projects  
NOTE: mounted displays can be of different size & model

### Supported super ultrawides include:

- Samsung Odyssey Neo G9
- Samsung CRG9
- LG 49WL95C-WE
- Philips Brilliance 499P9H
- Dell UltraSharp QHD Curved Monitor
- Asus ROG Strix Curved Gaming Monitor
- AOC AGON 49-Inch 120Hz Gaming Monitor

& many more

## Ordering guide

Atdec Code	Finish	Display weight		Display size	VESA
AWMS-2-BT75-FS	Black	4.5kg to 25kg	4.5kg to 18kg	24" to 55"	75x75, 100x100
		10lb to 55lb FLAT	10lb to 40lb CURVED		

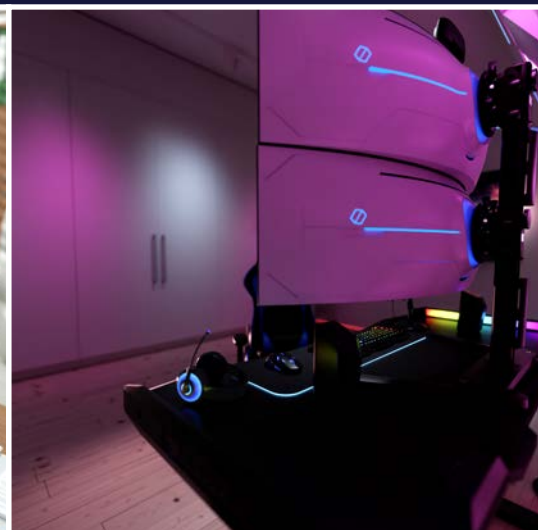
### TRADING



### CODING



### GAMING



**ATDEC** Infinite Mounting Possibilities

**Australia**  
+61 2 8729 5000  
support@atdec.com  
www.atdec.com.au

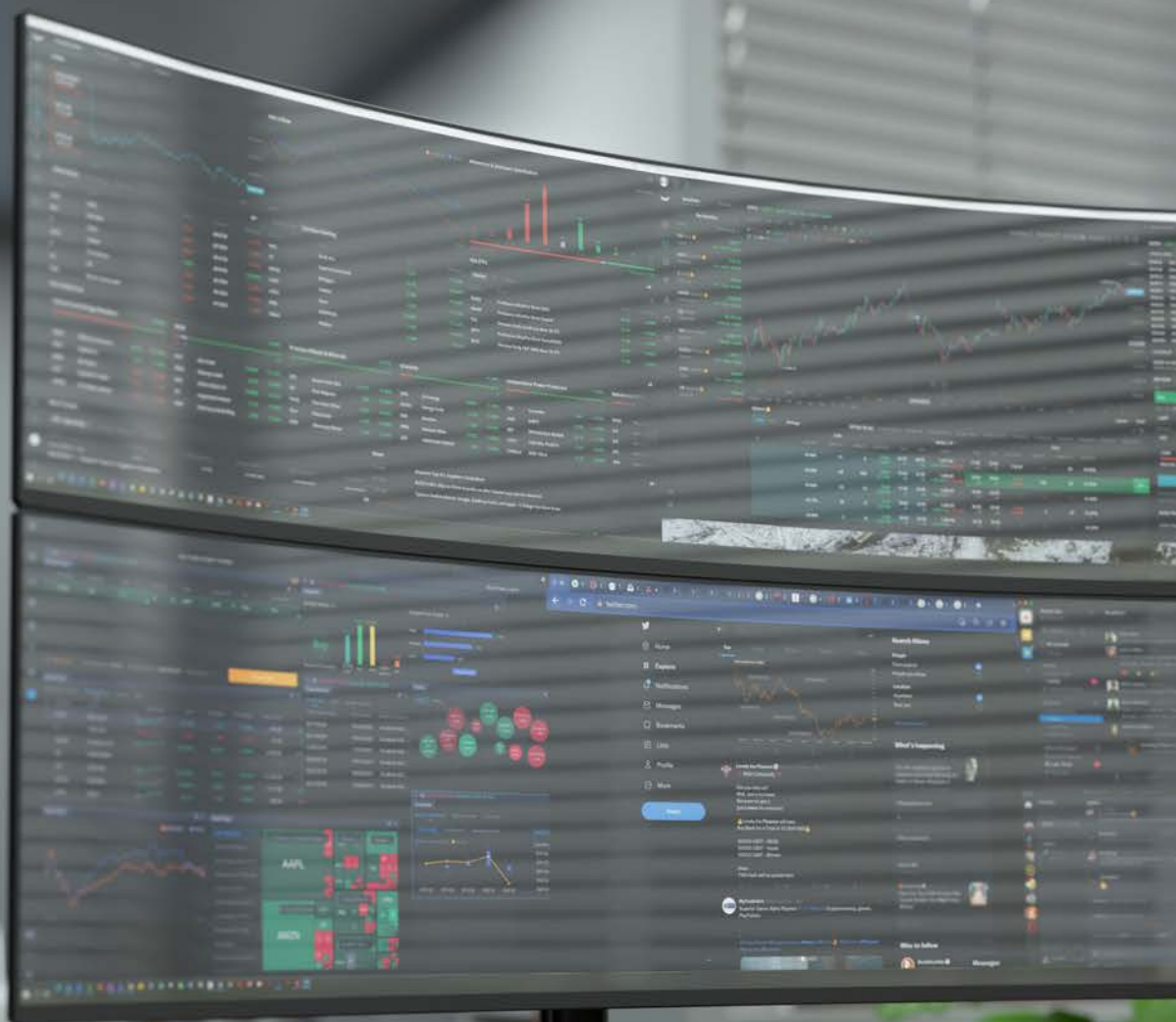
**North America**  
888 303 4252  
usasales@atdec.com  
www.atdec.com

**Europe**  
+44 3330 117725  
sales@atdec.co.uk  
www.atdec.co.uk

**New Zealand**  
0800 887 298  
nz@atdec.com  
www.atdec.co.nz

# DAY TRADERS

ORDER CODE: AWMS-2-BT75-FS



**Day traders aggregate large volumes of data to make fact-informed decisions**

Improve your productivity & effectiveness with our freestanding mount for dual ultrawide displays up to 49" and 18kg (40lb).



# GAMING

ORDER CODE: AWMS-2-BT75-FS

**Level up with our freestanding mount for dual stacked monitors.** Rigorously tested & proven for all Samsung Odyssey G9s. Avoid mounts used out of specification with limited functionality & choose Atdec for high performance. Super ultrawides to 55" & 18kg (40lb).