



# LCD Cart

H8



**NON-POWERED**

## Mobile Technology Workstations

[www.altus-inc.com](http://www.altus-inc.com)



[sales@altus-inc.com](mailto:sales@altus-inc.com)



# LCD Cart

## H8

Model Number	Worksurface Dimensions	Base Dimensions	Weight
H8-YYYY	17"D x 20"W	18"W x 20"D	58 lbs.



### LCD Monitor Support (FSA-10)

Vesa standard 75mm/100mm with quick mount plate

Tilt Range: +13°/-29°

+/- 161° Swivel

### 5.5" of height adjustment

Integrated Cable Management

**Weight limit 5 lbs to maximum of 20 lbs.**



### INCLUDED ACCESSORY

#### Keyboard Platform and Mousing (KPB)

One-piece design

Left/right mousing area and cable management

Mousing area: 6"H x 8"W

1/2" walls of keyboard platform prevent keyboard and mouse from falling off

Intuitive 0/-8 degrees tilting keyboard platform extends 5.62"

Contoured wristrest



### BASE

Ascend height adjustable base

#### 4"/100mm Rollerblade Casters 2

2 Locking / 2 non-locking

18"W x 20"D footprint

See accessories for additional caster options



#### Non-Powered Cart Handle (HN)

Cast Aluminum Construction  
18.44"W x .58"D x 1"H

**Counterweight (CW)**  
13.25" W x 14"D x .25"H



### WORKSURFACE

5/8" Thick worksurface

3D laminate

Hinges with kickstand

Keyed lock (HIPAA Compliant)

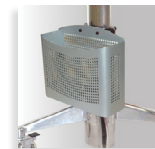
Height adjustment hand lever

Technology storage area dimensions:  
12.25"W x 10.75"D x 2.375"H



### MULTIPLE OPTIONS & ACCESSORIES

(See Spec Guide for full listing)



HFH  
Utility basket  
platinum finish



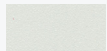
CPC-5  
Coiled power cord  
hospital grade -  
3-outlet black finish

### WORKSURFACE & ACCENT COLORS

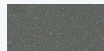
(YYYY = four digit part number).

Select from one of two worksurfaces:

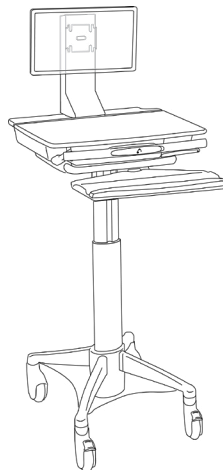
**Cloud or Shark Grey**



Cloud  
0141



Shark Grey  
6005



### KEY ADJUSTABILITY FEATURES:

**Worksurface Height Adjustment Range:** 31.12" - 49.00"

**Keyboard Height Adjustment Range:** 25.69" - 43.50"

**Monitor Support Height Adjustment Range:**

9 3/4" - 15 1/4" (Measured from middle of VESA plate to base of monitor support)

5.5" height adjustment