

9110-HD SERIES

MONITOR ARMS



HAT
DESIGN WORKS™
HUMAN ACTIVE TECHNOLOGY

SAVE MAXIMUM SPACE.

The 9110-HD series features our spring-assisted HD tilter for greater weight capacity and smoother monitor tilt adjustment. You can add optional extender arms to allow even greater flexibility and range.



FEATURES

- **Robust:** Includes our spring-assisted tilter for greater weight capacity and smoother monitor tilt adjustment.
- **Adjustable:** This computer monitor and flat screen TV wall mount features adjustable tension at joints - ideal for touch-screen applications.
- **Easy:** Easily pivot the monitor from portrait to landscape.
- **Customizable:** Extend the wall mount with available 4" and 8.5" extension arms; they can also be combined to increase the extension to over 18".
- **Compatible:** VESA-monitor compatible - 75 & 100mm VESA adapter included.

SPECIFICATIONS

Finishes

- Vista Black
- 104

Dimensions

Screen Size:	Up to 43"
Extension	4" (9110-HD)
Range:	7.6" (9110-HD-4)
	11.1" (9110-HD-8.5)
	14.6" (9110-HD-8.5-4)
	18.1" (9110-HD-8.5-8.5)
Weight	Up to 45 lbs. (9110-HD)
Capacity:	Up to 40 lbs. (9110-HD-4)
	Up to 28 lbs. (9110-HD-8.5)
	Up to 22 lbs. (9110-HD-8.5-4)
	Up to 18 lbs. (9110-HD-8.5-8.5)

Part Numbers

- 9110-HD-__
- 9110-HD-4-__
- 9110-HD-8.5-__
- 9110-HD-8.5-4-__
- 9110-HD-8.5-8.5-__



9110-HD

9110-HD-4

9110-HD-8.5



9110-HD-8.5-4

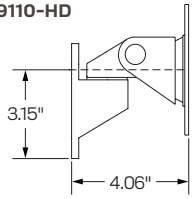
9110-HD-8.5-8.5

WARRANTY

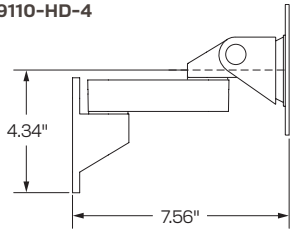
10 Years

CAPABILITIES

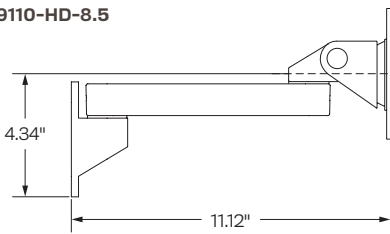
9110-HD



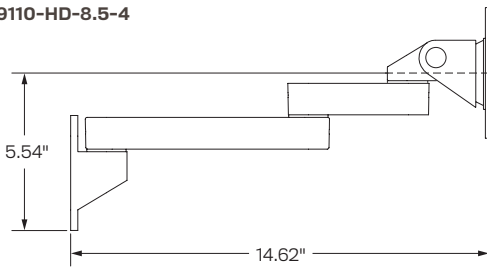
9110-HD-4



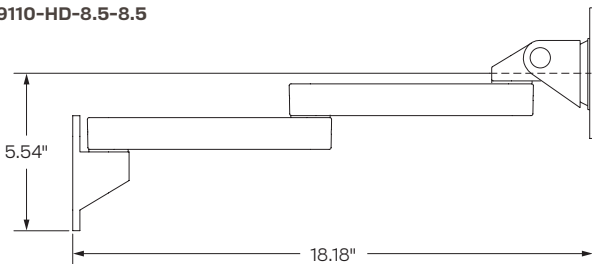
9110-HD-8.5



9110-HD-8.5-4



9110-HD-8.5-8.5



Mount
(All Models)

