

# EQUINOX 8500I WALL MOUNT

PAYMENT TERMINAL MOUNTS



HAT  
DESIGN WORKS™  
HUMAN ACTIVE TECHNOLOGY

# MOUNT YOUR TECHNOLOGY EXACTLY WHERE YOU NEED IT.

HAT's payment terminal wall mounts are designed and engineered to withstand heavy-use environments.



The PTS-WM-8500I supports the Equinox 8500I payment device.

## FEATURES

- **Fast:** A simple installation process makes setup fast and easy.
- **Adjustable:** Easily adjust tilt and rotation to create a comfortable viewing angle.
- **Aesthetic:** Clean, compact design conveys a quality image.
- **Secure:** Protects your IT investment by securing your technology to the wall.
- **Durable:** Sturdy construction stands up to heavy use.
- **Customizable:** Extend the wall mount with available 4", 8" or 12" articulating extension arms; they can also be combined to create the desired reach.

## SPECIFICATIONS

### Finishes

 Vista Black  
104

### Dimensions

Rotation: Up to 180° \*

Tilt: Up to 180° \*

### Part Numbers

PTS-WM-8500I-104

### Accessories

MNEA10-04B 4" Extension Arm

MNEA10-08B 8" Extension Arm

MNEA10-12B 12" Extension Arm



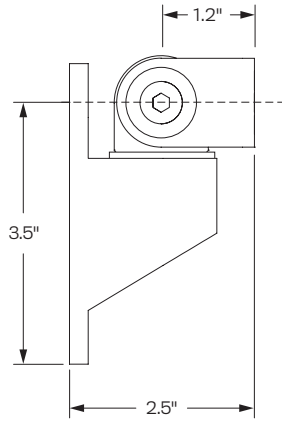
Increase flexibility by combining the wall mount with our optional extension arms

## WARRANTY

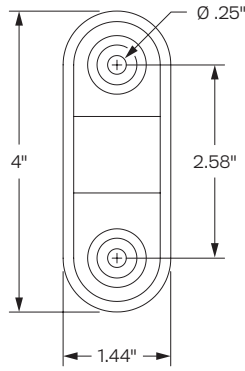
10 Years

CAPABILITIES

Mount

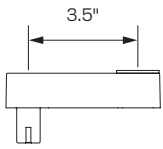


Side

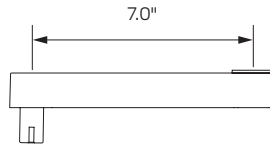


Back

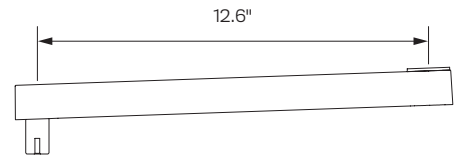
Accessories



4" Extension Arm  
MNEA10-04B



8" Extension Arm  
MNEA10-04B



12" Extension Arm  
MNEA10-12B