

VERIFONE MX915/MX925/M400/M440 WALL MOUNT

PAYMENT TERMINAL MOUNTS



HAT
DESIGN WORKS™
HUMAN ACTIVE TECHNOLOGY

MOUNT YOUR TECHNOLOGY EXACTLY WHERE YOU NEED IT.

HAT's payment terminal wall mounts are designed and engineered to withstand heavy-use environments.



The PTS-WM-M400-MX915 supports the Verifone MX915, MX925, M400, or M440 payment device.

FEATURES

- **Fast:** A simple installation process makes setup fast and easy.
- **Adjustable:** Easily adjust tilt and rotation to create a comfortable viewing angle.
- **Aesthetic:** Clean, compact design conveys a quality image.
- **Secure:** Protects your IT investment by securing your technology to the wall.
- **Durable:** Sturdy construction stands up to heavy use.
- **Customizable:** Extend the wall mount with available 4", 8" or 12" articulating extension arms; they can also be combined to create the desired reach.

SPECIFICATIONS

Finishes

 Vista Black
104

Dimensions

Rotation: Up to 180° *
Tilt: Up to 180° *

Part Numbers

PTS-WM-M400-MX915-104

Accessories

MNEA10-04B 4" Extension Arm
MNEA10-08B 8" Extension Arm
MNEA10-12B 12" Extension Arm



Increase flexibility by combining the wall mount with our optional extension arms

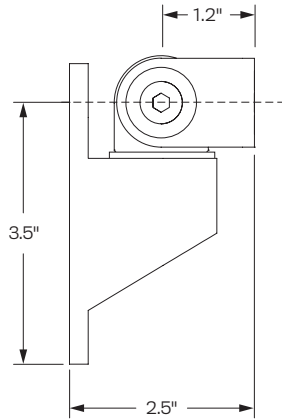
WARRANTY

10 Years

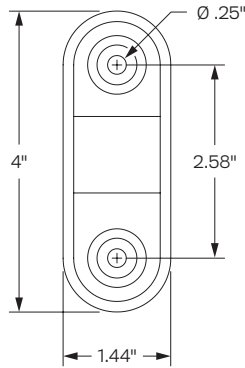
* Range of motion may be limited by the size of the payment terminal and proximity to wall.

CAPABILITIES

Mount

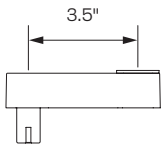


Side

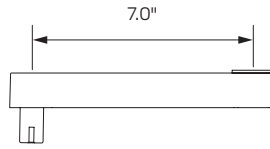


Back

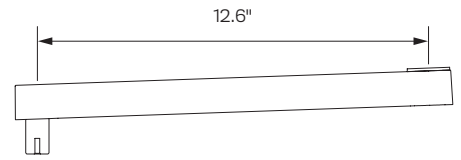
Accessories



4" Extension Arm
MNEA10-04B



8" Extension Arm
MNEA10-04B



12" Extension Arm
MNEA10-12B